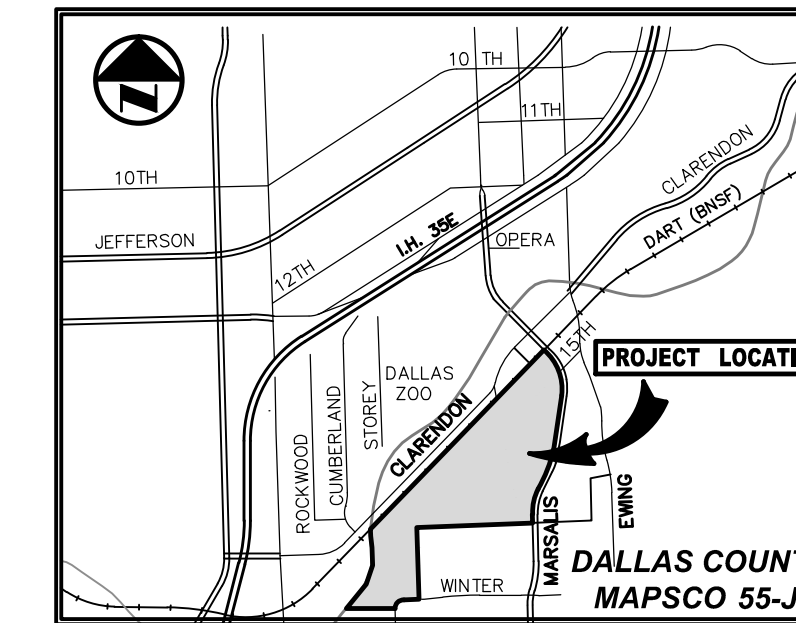
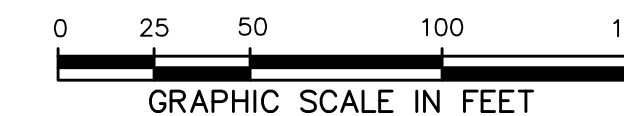
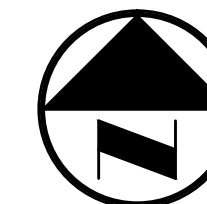


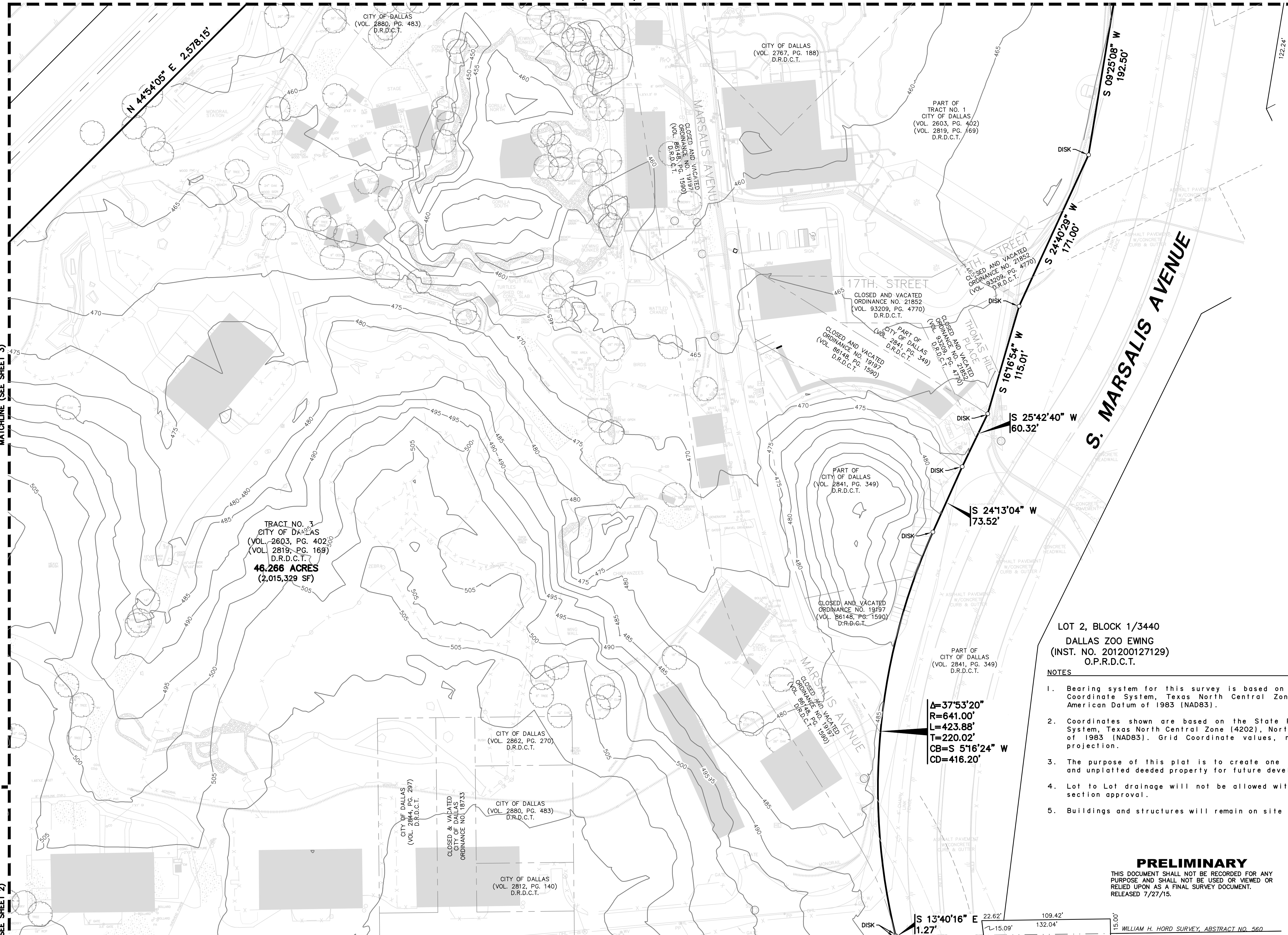
MATCHLINE (SEE SHEET 4)



VICINITY MAP (NOT TO SCALE)

LEGEND

- Legend items including A/C UNIT, BOLLARD, CLEANOUT, ELECTRIC BOX, ELECTRIC METER, FIRE HYDRANT, FLAG POLE, FLOOD LIGHT, GAS MANHOLE, GUY ANCHOR, HAND HOLE, IRRIGATION CONTROL VALVE, LIGHT STANDARD, MANHOLE, POWER POLE, PP W/ LIGHT, PP W/ GUY ANCHOR, TRAFFIC SIGN, SAN. SEWER MANHOLE, TELEPHONE BOX, TRAFFIC SIGNAL POLE, STORM SEWER MANHOLE, TELEPHONE MANHOLE, VENT, WATER METER, WATER VALVE, 1/4 INCH ALUMINUM DISK, STAMPED "PACHECO KOCH" AND "WILDS OF AFRICA" SET, PFC POINT FOR CORNER, CONTROLLING MONUMENT, MAP RECORDS OF DALLAS COUNTY, TEXAS, D.R.D.C.T., O.P.R.D.C.T., PROPERTY LINE, EASEMENT LINE, FENCE, OVERHEAD UTILITY LINE, HAND RAIL, GUARD RAIL, UNDERGROUND ELECTRIC LINE, UNDERGROUND TELEPHONE LINE, UNDERGROUND CABLE LINE, UNDERGROUND GAS LINE, WATER LINE, SANITARY SEWER LINE, STORM DRAIN LINE, EXIST CONTOUR.



MATCHLINE (SEE SHEET 3)

MATCHLINE (SEE SHEET 2)

TRACT NO. 1 CITY OF DALLAS (VOL. 2603, PG. 402) (VOL. 2819, PG. 169) D.R.D.C.T. 46.266 ACRES (2,015,329 SF)

LOT 2, BLOCK 1/3440 DALLAS ZOO EWING (INST. NO. 201200127129) O.P.R.D.C.T.

A=37°53'20" R=641.00' L=423.88' T=220.02' CB=S 51°6'24" W CD=416.20'

- NOTES: 1. Bearing system for this survey is based on the State Plane Coordinate System, Texas North Central Zone (4202), North American Datum of 1983 (NAD83). 2. Coordinates shown are based on the State Plane Coordinate System, Texas North Central Zone (4202), North American Datum of 1983 (NAD83). Grid Coordinate values, no scale and no projection. 3. The purpose of this plat is to create one lot from platted and unplatted deeded property for future development. 4. Lot to Lot drainage will not be allowed without engineering section approval. 5. Buildings and structures will remain on site as needed.

PRELIMINARY

THIS DOCUMENT SHALL NOT BE RECORDED FOR ANY PURPOSE AND SHALL NOT BE USED OR VIEWED OR RELIED UPON AS A FINAL SURVEY DOCUMENT. RELEASED 7/27/15.

SURVEYOR:

PACHECO KOCH CONSULTING ENGINEERS 8350 N. CENTRAL EXPWY., SUITE 1000 DALLAS, TEXAS 75206 CONTACT: MICHAEL CLOVER PHONE: (972) 235-3031

OWNER:

CITY OF DALLAS 650 S. R.L. THORNTON FRWY. DALLAS, TEXAS 75203 CONTACT: DOUG DYKMAN PHONE: (469) 554-7540

PRELIMINARY PLAT

WILDS OF AFRICA LOT 1, BLOCK 3442

BEING PART OF CITY BLOCKS 3442, AND 3753, PART OF THOMAS' SOUTH OAK CLIFF ADDITION, PART OF J. OAK SMITH'S SUBDIVISION AND PART OF T.J. OLIVERS SUBDIVISION AND BEING OUT OF THE WILLIAM H. HORD SURVEY, ABSTRACT NO. 560 AND THE THOMAS MCDOWELL SURVEY, ABSTRACT NO. 875, CITY OF DALLAS, DALLAS COUNTY, TEXAS CITY PLAN FILE NUMBER: S145-246 ENGINEERING PLAN NUMBER: 3111-

SHEET 1 OF 5

Pacheco Koch logo and contact information: 8350 N. CENTRAL EXPWY., SUITE 1000 DALLAS, TX 75206 972.235.3031 DALLAS, TX REG. ENGINEERING FIRM F-469 HOUSTON TX REG. SURVEYING FIRM LS-10008000

Table with columns: DRAWN BY (GMP), CHECKED BY (MCC), SCALE (1"=50'), DATE (JULY 2015), JOB NUMBER (2499-14.448)

MPR:GCE 07/27/2015 8:41AM M:\DWG-24\2499-14.448\DWG\SURVEY\CSD_2012\2499-14.448PP.DWG

WILDS OF AFRICA - PRELIMINARY PLAT